

KBB Automatic Door KH Series Hermetic & Hospital Door

Beijing KBB Automated Entrances Inc. (Headquarter Office)

Add: No.22 Shui Ku Road, Changping District, Beijing, China 102200

Tel: 8610 69748800

Fax: 8610 69745747

Email: service@kbb.com.cn

Shenyang KBB Automated Entrances Inc.

Add: No.117 Shen Bei Road, Hu Shi Tai High-tech Development Zone,
Shenyang, China 110122

Tel: 8624 89718800

Fax: 8624 89718800

Email: service@kbb.com.cn

KBB International Co., Ltd.

Add: Room A-1109, No.72 North Road of West 3rd Ring, Haidian
District, Beijing, China 100048

Tel: 8610 88825668

Fax: 8610 88825668 ext 300

Email: info@kbb.com.cn

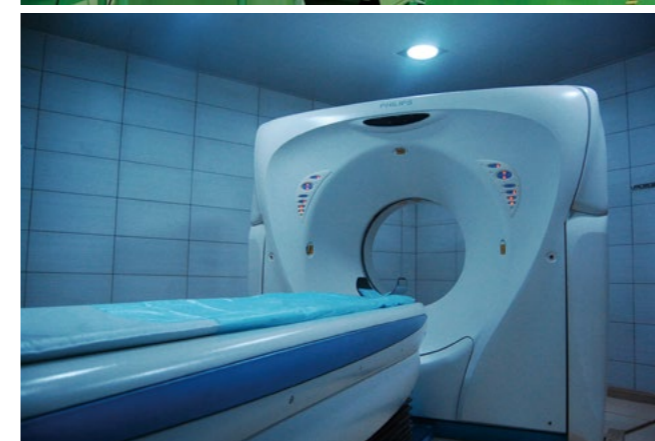
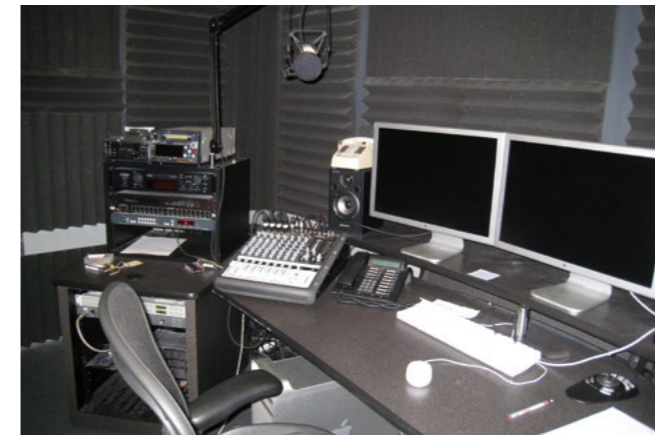
Copyright (c) 1992-2022, KBB. All rights reserved. All information is copyrighted by KBB and is governed by copyright laws.No portion of this publication may be reproduced or transmitted in any form or by any means, without the prior written permission of KBB.



KH Series Automatic Sliding Door

KH Series is a professional hermetic sliding door developed by KBB and applies to special location, which demand excellent airtightness, sound isolation and radiation protection.

KH Series products uses polyurethane high-pressure forming technology, which allows the door to be lighter, while strengthening sound and heat isolation, and energy savings. It has been highly welcomed for its dustproofing, fire-proofing, air-proofing and radiation protection.

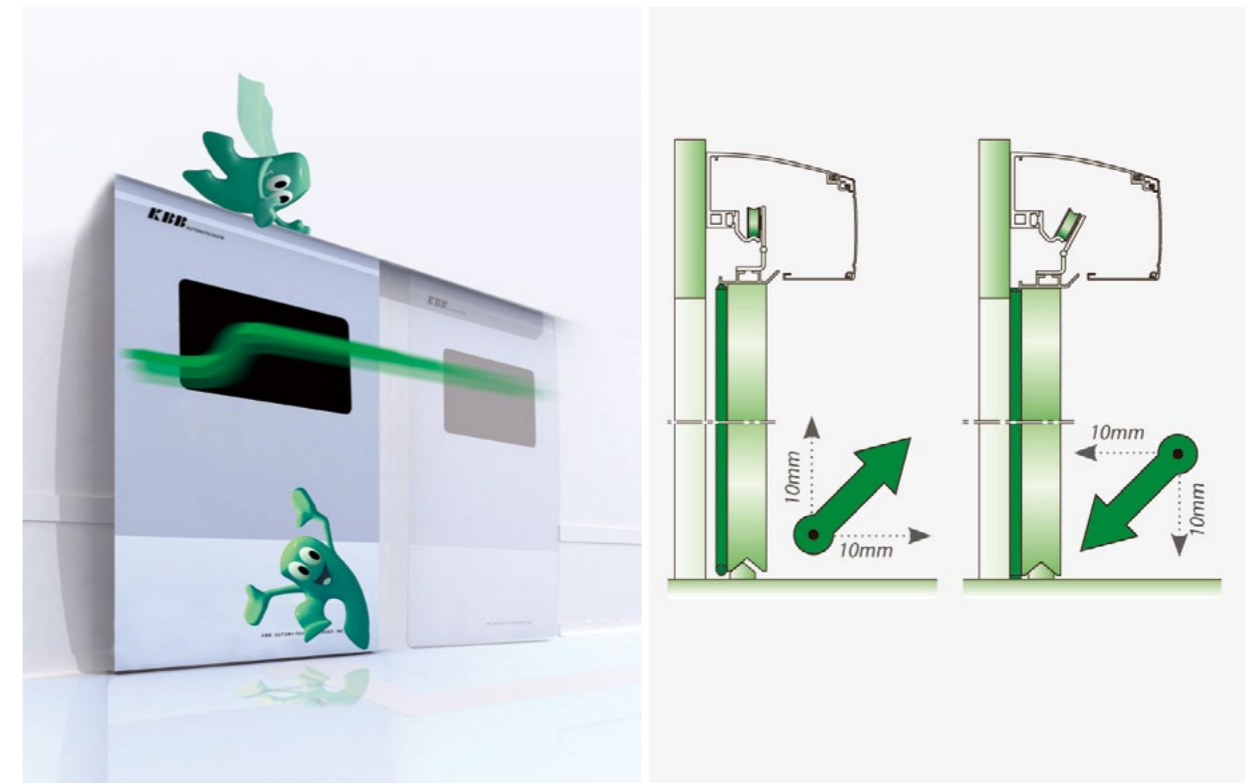


- | | |
|---|---|
| 1 | 2 |
| 3 | 4 |
| 5 | |



KBB hermetic sliding doors use a specially designed track along with special rubber attached to the inside and downside of the door.

In the closing process, the door compresses the rubber to the frame for the hermetic effect.



KH1000 Hermetic Door



Specification

Clear Passage Width	600mm-2500mm
Clear Passage Height	2100mm-2700mm
Maximum Opening Force	200Kg/300Kg
Opening Direction	Left/Right/Double way
Power Supply	220V/110V
Rated Power	100W
Motor Type & Power	Brushless,36V/100W,3A Max:180W,5A
Ambient Temperature Range	-15°C -55°C
Relative Humidity	≅ 85%
Operating Noise	≅ 50db



Door Body

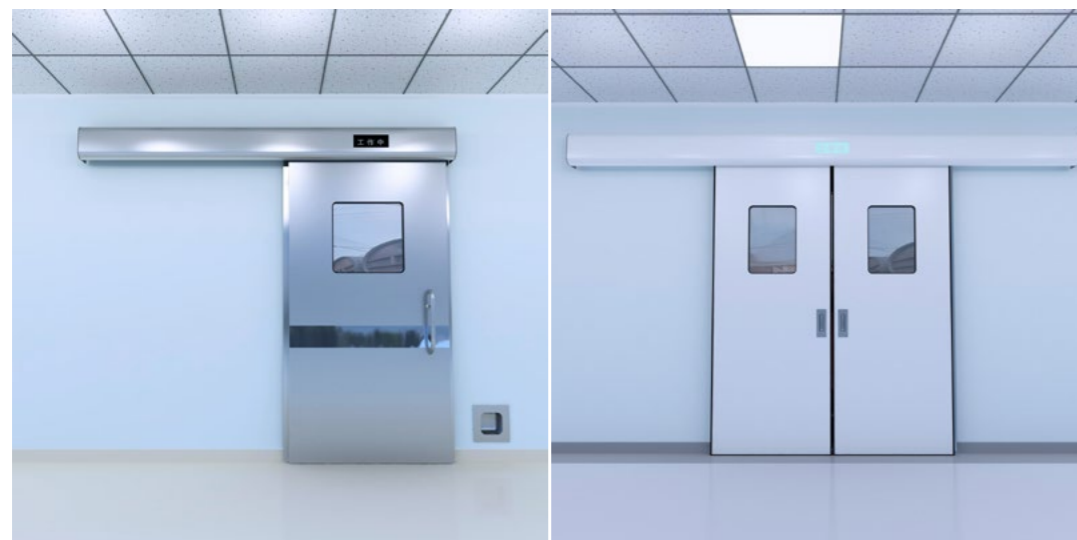
Surface Material	Aluminium	304 Stainless steel	316 Stainless steel	HPL Panel
Surface Treatment	Coating	Stainless steel color	Stainless steel color	Color
Thickness Panel	1.8mm	1.0mm	1.0mm	--

Standard Functions

Safety Beam	1 Pairs
Foot Sensor	1 Pairs
Cover	Aluminum Powder Coating
Observation window	Normal Glass Dimension:400mm*300mm or others
Handle	304 Stainless steel
Adjustment mode	Control Unit

Option Functions

Second Safety beam	S.Steel Cover	S.Steel Sealing frame	Hand Sensor
Radar	LED Key Switch	Battery Backup	Video system



KH1000 X RAY Hermetic Door



Standard Functions

Clear Passage Width	600mm-1500mm
Clear Passage Height	2100mm-2400mm
Maximum Opening Force	200Kg/300Kg
Opening Direction	Left/Right/Double way
Power Supply	220V/110V
Rated Power	100W
Motor Type & Power	Brushless,36V/100W,3A Max:180W,5A
Ambient Temperature Range	-15°C -55°C
Relative Humidity	85%
Operating Noise	50db



Door Body

Surface Material	Aluminium	304 Stainless steel	316 Stainless steel
Surface Treatment	Coating	Stainless steel color	Stainless steel color
Thickness Panel	1.8mm	1.0mm	1.0mm
Lead Panel	1mm/2mm	1mm/2mm	1mm/2mm

PS:X Ray Door can only install Lead glass as window.

Standard Functions

Safety Beam	1 Pairs
Foot Sensor	1 Pairs
Cover	Aluminum Powder Coating
Observation window	NO
Handle	304 Stainless steel
Adjustment mode	Control Unit

Option Functions

Second Safety beam	S.Steel Cover	S.Steel Sealing frame	Hand Sensor
Radar	LED Key Switch	Battery Backup	Video system
Lead window	200mm*300 mm	300 mm *400 mm	400 mm *500 mm



KH1000 ICU Hermetic Door



Specification

Clear Passage Width	600mm-2500mm
Clear Passage Height	2100mm-2700mm
Maximum Opening Force	200Kg
Opening Direction	Left/Right/Double way
Power Supply	220V/110V
Rated Power	100W
Motor Type & Power	Brushless,36V/100W,3A Max:180W,5A
Ambient Temperature Range	-15°C -55°C
Relative Humidity	85%
Operating Noise	50db

Door Body

Surface Material	304 Stainless steel	316 Stainless steel
Surface Treatment	Stainless steel color	Stainless steel color
Thickness Panel	1.0mm	1.0mm

Standard Functions

Safety Beam	1 Pairs
Foot Sensor	1 Pairs
Cover	Aluminum Powder Coating
Handle	304 Stainless steel
Adjustment mode	Control Unit

Option Functions

Second Safety beam	S.Steel Cover	S.Steel Sealing frame	Hand Sensor
Radar	LED Key Switch	Battery Backup	Video system



KH Hospital Door



Specification

Clear Passage Width	600mm-2500mm
Clear Passage Height	1000mm-1500mm
Maximum Opening Force	150Kg
Relative Humidity	85%

Door Body

Surface Material	Aluminium	304 Stainless steel	316 Stainless steel
Surface Treatment	Coating	Stainless steel color	Stainless steel color
Thickness Panel	1.8mm	1.0mm	1.0mm